

ELECTRIC DUMPSTER | HTD-5E



MAX CARRY CAPACITY
500kg

LOAD OVER HEIGHT
1.45m

BATTERY RATING
4.9kWh

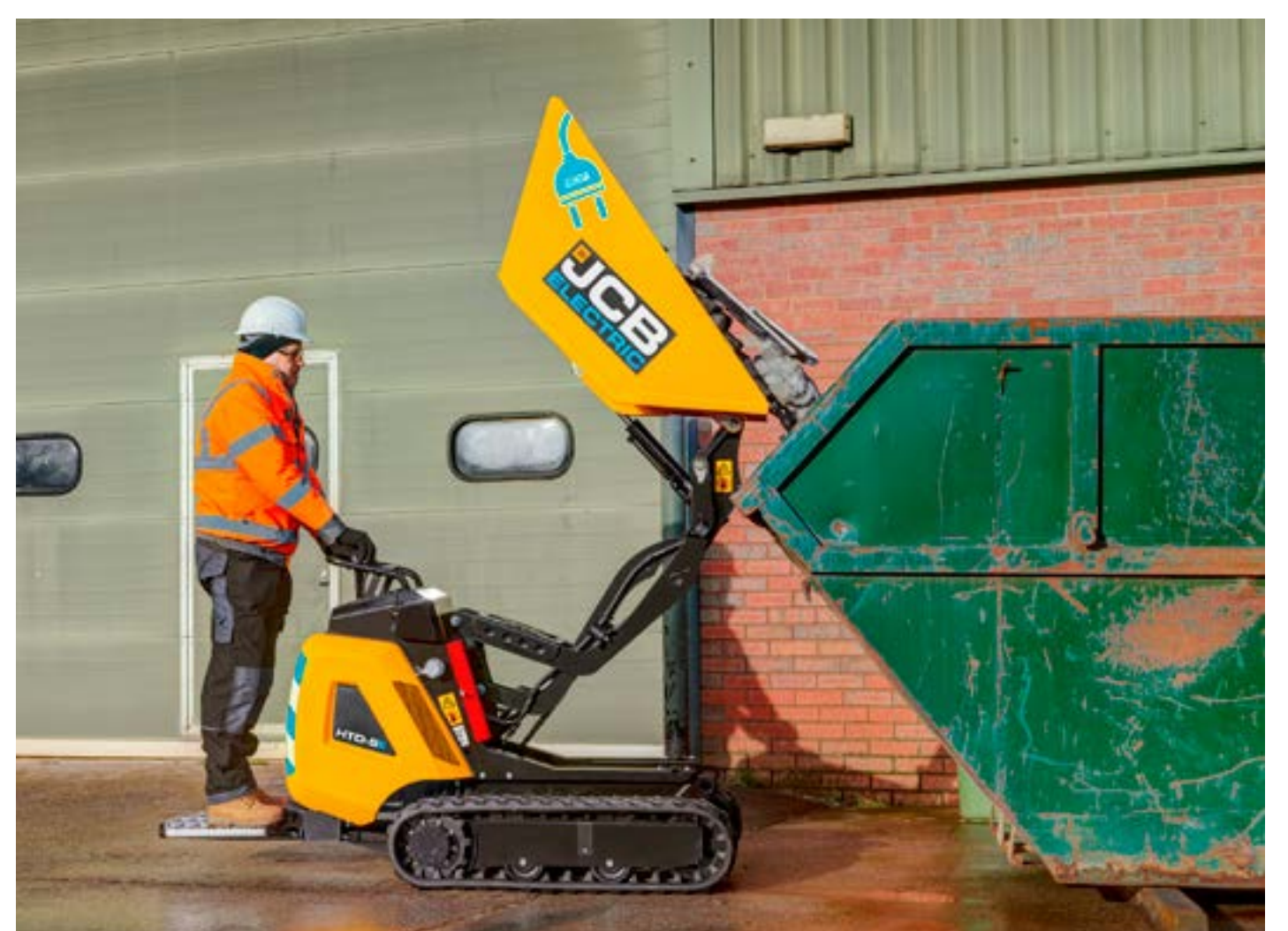
ZERO EMISSIONS AT POINT OF USE.

The new HTD-5E is the industry's first high volume fully electric dumpster, with zero emissions at point of use and zero compromise on performance.



IDEAL INDUSTRY'S

We have ensured that the HTD-5E is equally safe and productive. An ideal product for the rental industry, housebuilding, landscaping, agriculture and much more.



LOW NOISE LEVELS.

Low noise levels make the Electric dumpster ideal for urban areas, indoor working, 'out-of-hours' working, and allows better communication with co-workers.



NOISE REDUCTION

Operator station noise is reduced by a huge 14dB compared to the diesel model.

A FULL DAYS SHIFT.

Lithium-ion batteries power the machine for a full typical day, whilst offering two charging options: 110V, 230V to aid versatility.



INNOVATIVE SAFETY

An incredible charge time of just 73 minutes* from any standard domestic 3 pin plug.

*Charge times measured from 20-80% (Industry Standard)



ELECTRIC DUMPSTER | HTD-5E



SPECIFICATION.

MODEL		HTD-5E
Part Number		980/E2100
Maximum Carry Capacity	kg (lb)	500 (1,102)
Unladen Mass	kg (lb)	566 (1,248)
Overall Height (transport position)	mm (ft-in)	1,105 (3-8)
Load Over Height	mm (ft-in)	1,500 (4-11)
Maximum Height (tipping position)	mm (ft-in)	2,700 (8-10)
Peak Power	kW	9
Continuous Power	kW	4.5
Peak Torque	Nm	42
Battery Rating	kWh	4.9
System Voltage	V	48
Maximum Tracking Speed	km/h	3





HTD-5E

ELECTRIC DUMPSTER

The HTD-5E is a compact, high-tip, electric powered Dumpster, designed by JCB to save you time, energy and money.

IDEAL FOR ALL INDUSTRY'S.

REQUEST A QUOTE

BUY ONLINE NOW