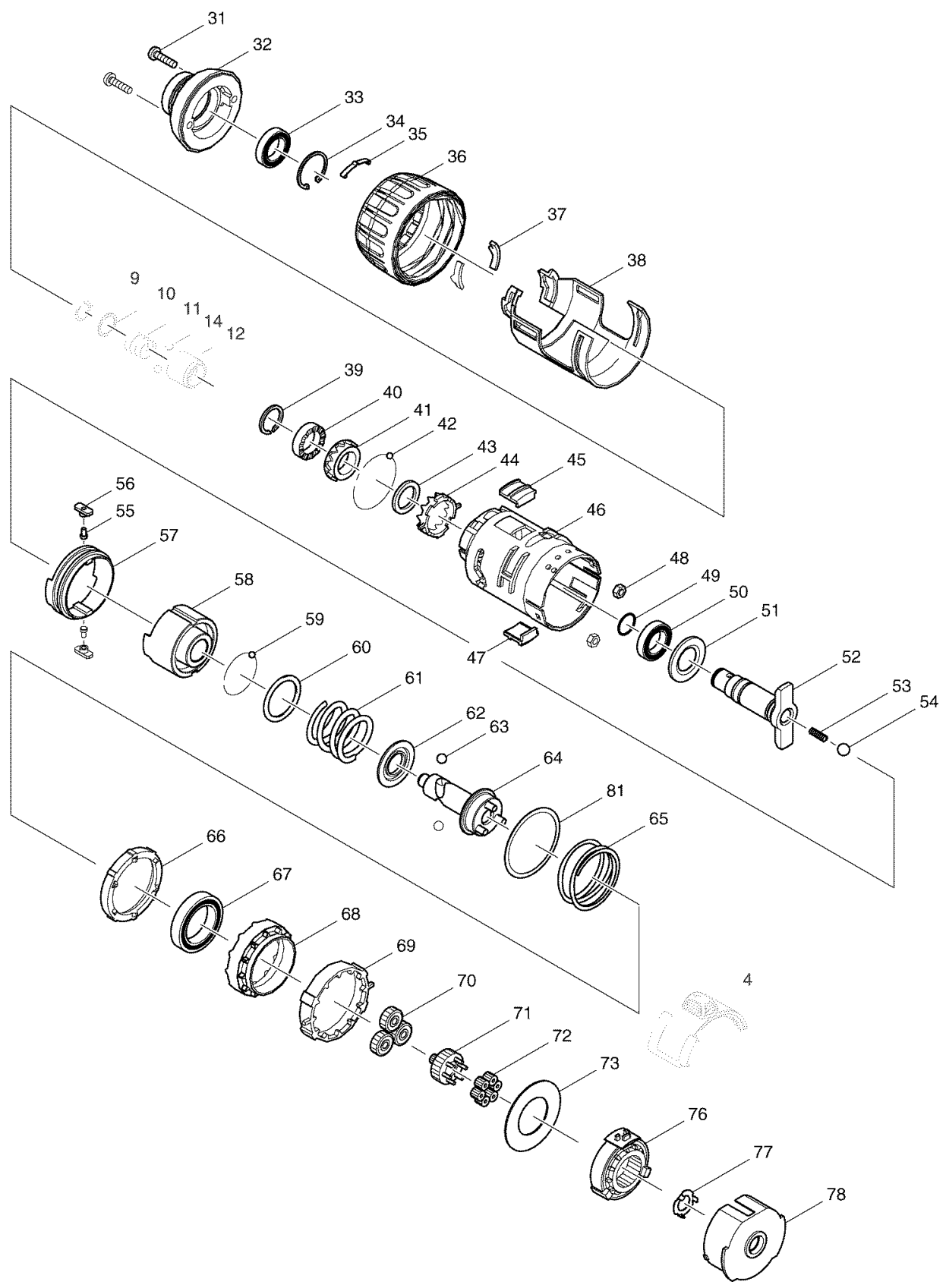


No.	Part no.	Name
8	643843-3	TERMINAL BVF104/BVR154RF
14	216001-0	*STEEL BALL 3.5 10PK
6	650568-2	SWITCH TG553FSB-2 BTP130/140
79	345689-0	PLATE B BTP130/140
80	345690-5	PLATE C BTP130/140
2	862532-3	NAME PLATE BTP140
17	619246-3	ARMATURE BTP140
20	263032-0	RUBBER PIN 4 BFS440/BHP451
7	652045-0	PANHD SCREW M3.5X5 BTD130F/BTP
21	418981-8	REAR COVER BDF450/BHP450/BTD14
5	419041-9	F/R CHANGE LEVER BTD130/132/14
3	266130-9	*TAPPING SCREW BIND 3X 16 10PK
22	266130-9	*TAPPING SCREW BIND 3X 16 10PK
9	231951-8	RING SPRING 11 6903VDW/6705D
10	267085-1	*NARROW WASHER 12 6705D 5PK
24	631693-8	LIGHT CIRCUIT BTD140SFE/BTP130
12	324420-7	SLEEVE 6916FD/6980FD/6932FD
26	324705-1	HOOK TW250D/BST220/BST221
19	638424-6	BRUSH HOLDER COMP BHP440/BTP14
11	233005-7	*COMPRESSION SPRING 13 5PK
1	188652-8	HOUSING SET BTP140
25	188652-8	HOUSING SET BTP140
18	194427-5	CARBON BRUSH CB-440 BFS440
15	125515-7	IMPACT ASSEMBLY BTP130/140
13	424197-5	BUMPER
16	638396-5	YORK UNIT BTD130F/BTP130/140
27	251314-2	SPECIAL PAN HD SCREW M4X12



No.	Part no.	Name
42	216001-0	*STEEL BALL 3.5 10PK
59	216001-0	*STEEL BALL 3.5 10PK
54	216009-4	*STEEL BALL 7.1 10PK
63	216011-7	*STEEL BALL 5.6 10PK
55	256495-7	SHOULDER PIN 3-6 BTP140
57	257276-2	RING 40 BTP130/140
64	154856-4	SPINDLE COMPLETE BTP130/140
40	223161-1	CAM A BTP130/140
41	223162-9	CAM B BTP130/140
66	223163-7	CLUTCH CAM BTP130/140
37	345688-2	PLATE A BTP130/140
32	318011-4	HAMMER CASE COMP BTD062Z/BTP13
48	931102-0	*HEX FULL NUT M4 10PK
51	261130-4	NYLON WASHER 15 BTP130/140
76	158106-9	SPEED CHANGE RING COMP BTP130/
71	158553-4	SPUR GEAR 7 COMP BTP130/140
31	265178-8	PAN HD SCREW M4X16 BTP130/140
70	227159-0	SPUR GEAR 22 BTP130/140
72	227160-5	SPUR GEAR 10 BTP130/140
68	227162-1	INTERNAL GEAR 50 BTP130/140
46	419369-5	GEAR CASE BTP130/140
38	419370-0	CHANGE CASE BTP130/140
78	419371-8	MOTOR BRACKET BTP130/140
36	419372-6	CHANGE RING BTP130/140
45	419374-2	PUSHER U BTP130/140
47	419375-0	PUSHER L BTP130/140
56	419376-8	GUIDE BTP130/140
44	324655-0	HAMMER CHANGE LEVER BTP130/140
69	324656-8	CLUTCH CHANGE LEVER BTP130/140
58	324658-4	HAMMER BTP130/140
52	324661-5	ANVIL M
35	232227-6	LEAF SPRING BTP130/140
53	233285-5	*COMPRESSION SPRING 4 10PK
65	233462-9	COMPRESSION SPRING 41 BTP130/1
60	267175-0	FLAT WASHER 24 6914DZ/16DZ/BTP
73	267317-6	FLAT WASHER 25 BTP130/140
43	267318-4	FLAT WASHER 15 BTP130/140
81	267337-0	FLAT WASHER 40 BTP130/140
62	267766-7	CUP WASHER 14 6916D/18D/BTP130
77	267799-2	WASHER 10 BTP130/140
39	961085-0	RETAINING RING WR-15 BTP130/14
34	962113-4	RETAINING RING R-24 BTP130/140
61	234080-6	COMPRESSION SPRING 24 BTD130F
33	211233-4	BALL BEARING 6802LLB BTP130/1
50	211233-4	BALL BEARING 6802LLB BTP130/1
67	211375-4	BALL BEARING BHR162/HR1830
49	213166-9	OIL SEAL 12.5 TD0101F/BTP130/1